

Инсталиране и конфигуриране на
репликация на MySQL server



Microinvest

2013

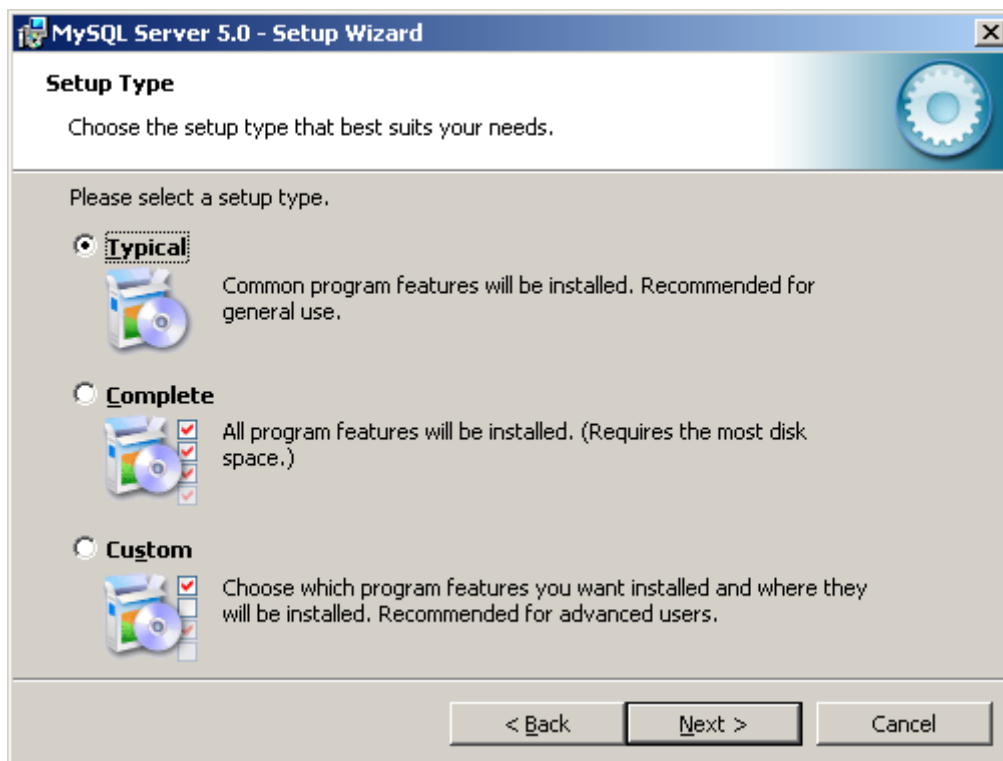
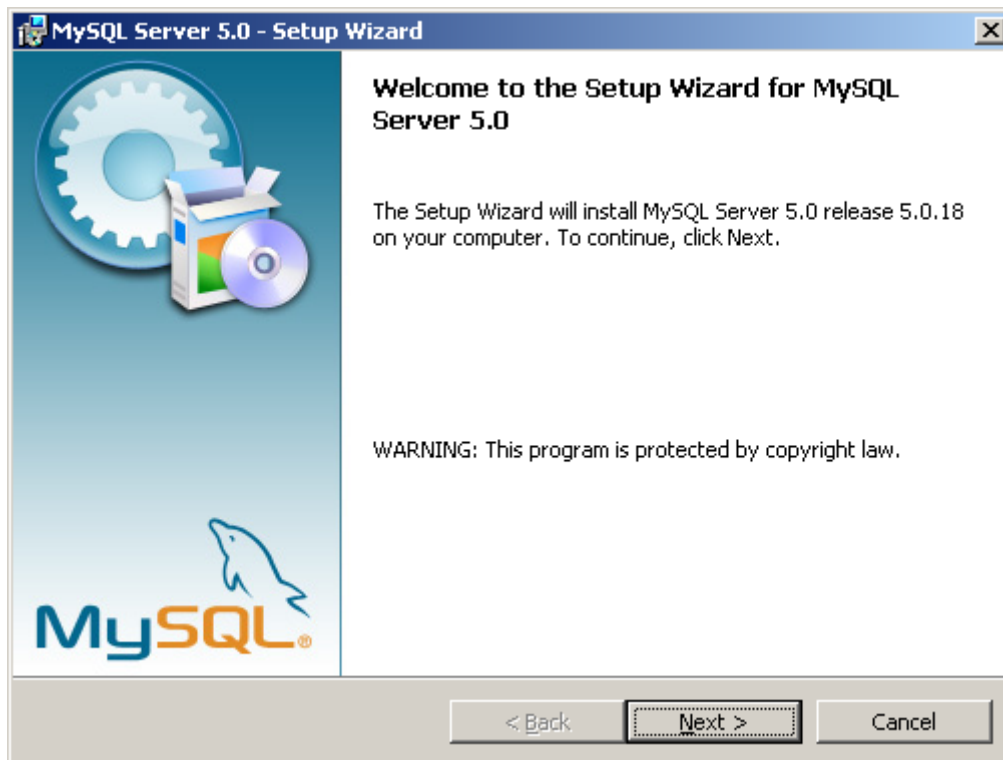
СЪДЪРЖАНИЕ:

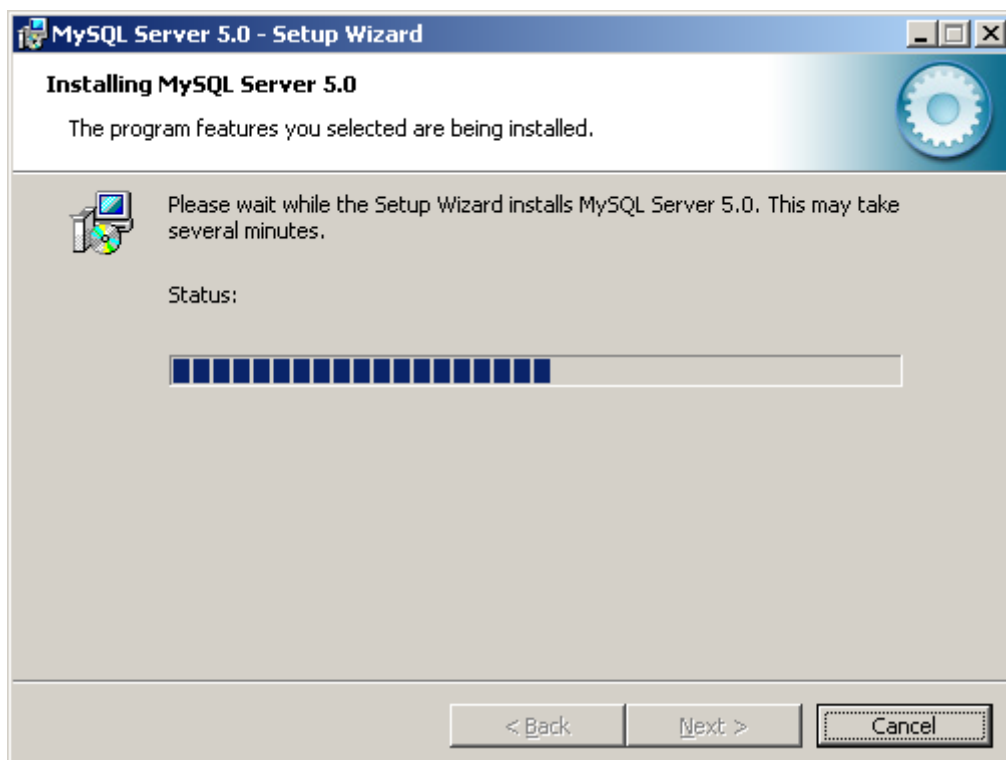
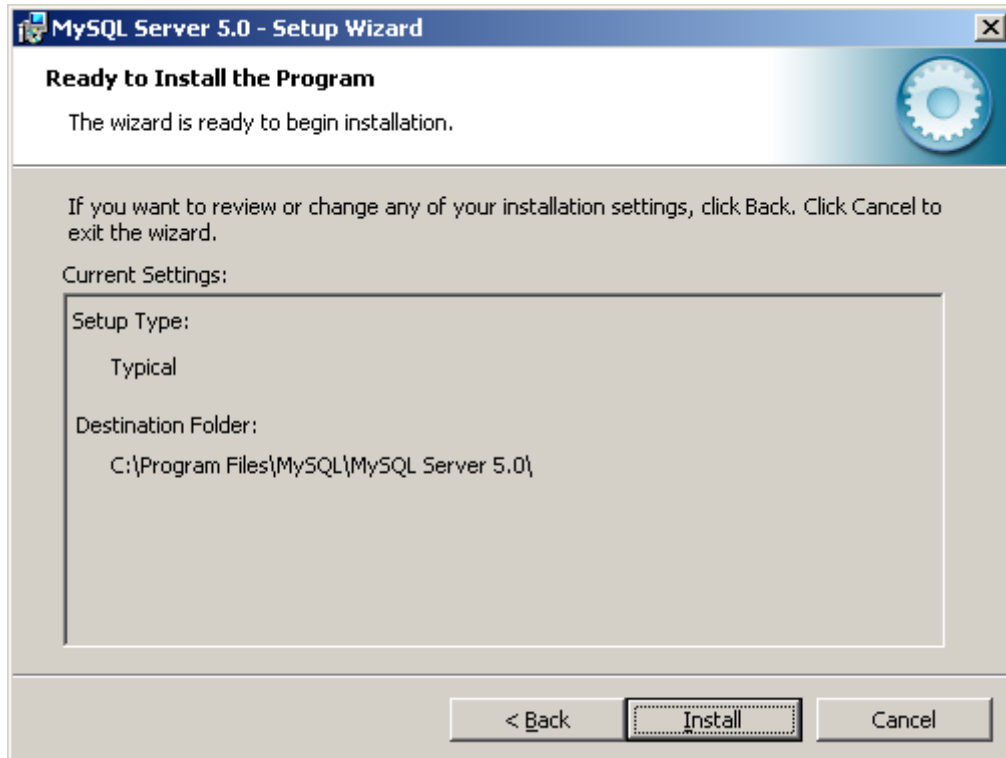
| | |
|--------------------------------------|----|
| I. Инсталация..... | 2 |
| II. Настройка на Master сървъра..... | 15 |
| III. Настройка на Slave сървъра..... | 17 |

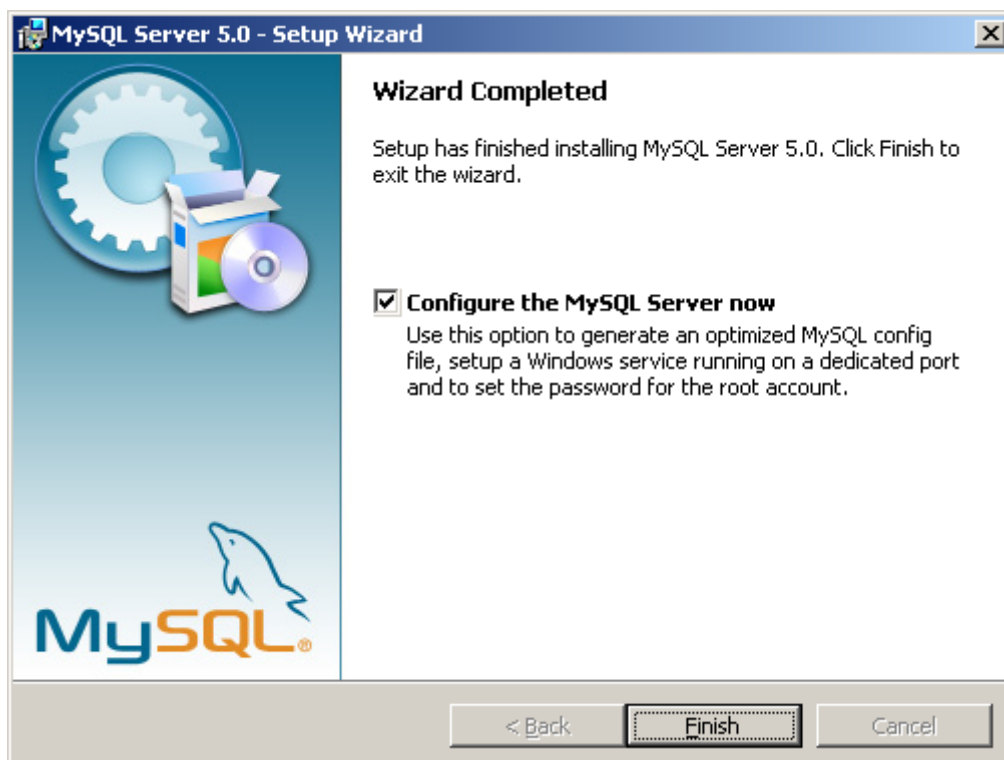
I. Инсталация

1. Инсталирайте:

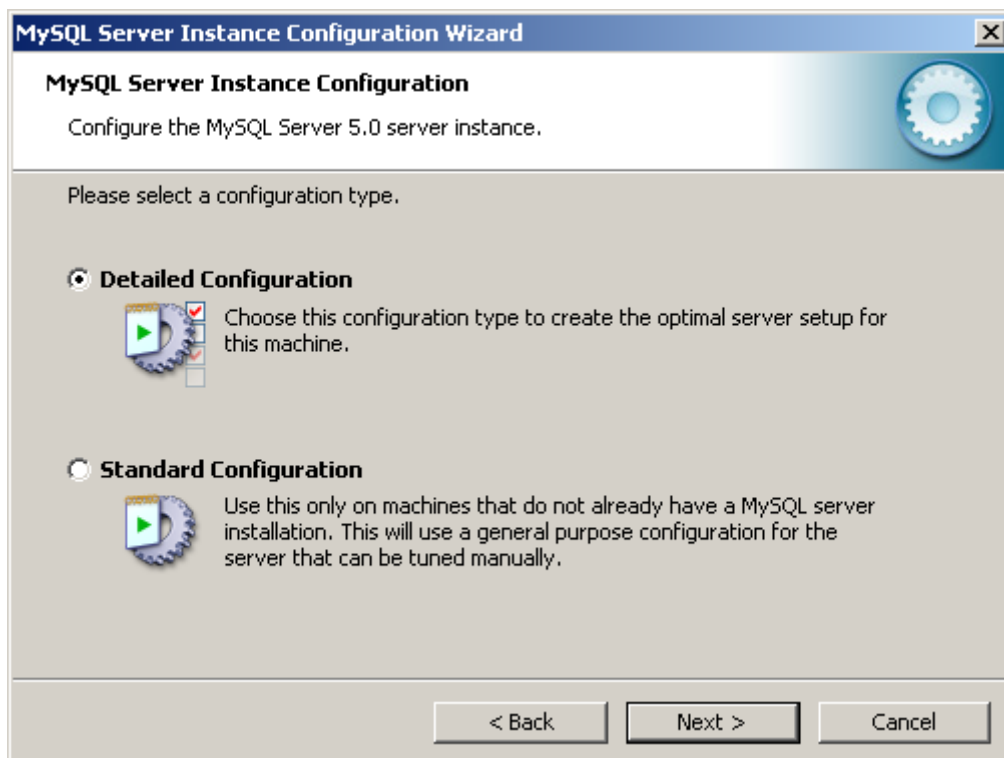
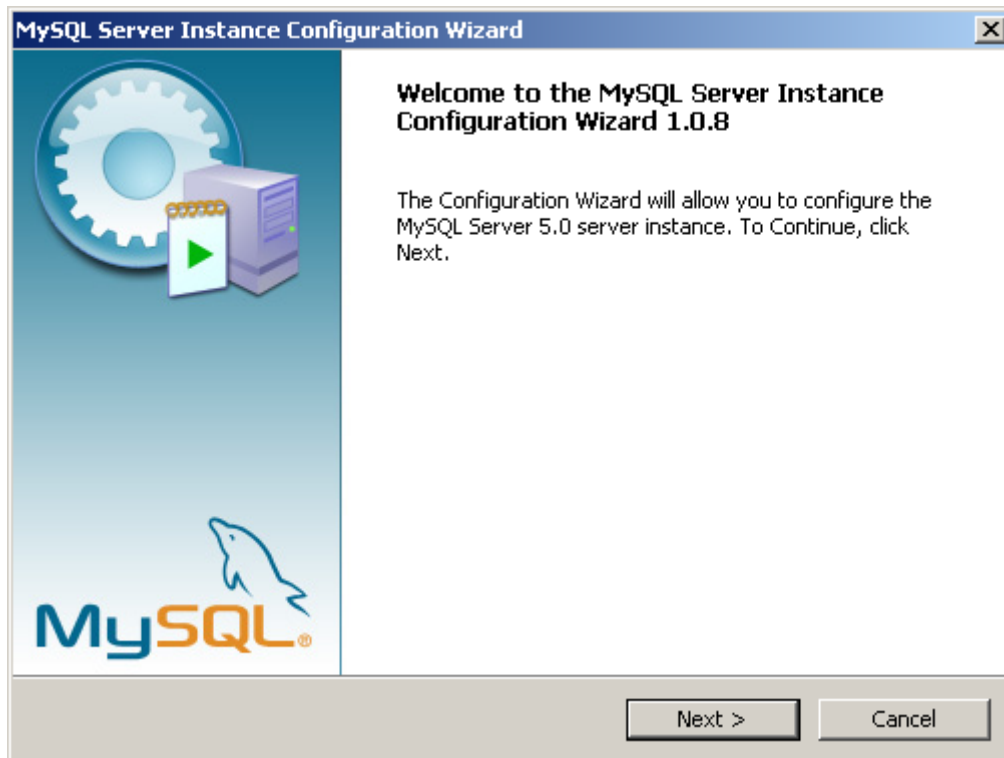
- mysql-essential-5.0 (или текущата версия на диска);

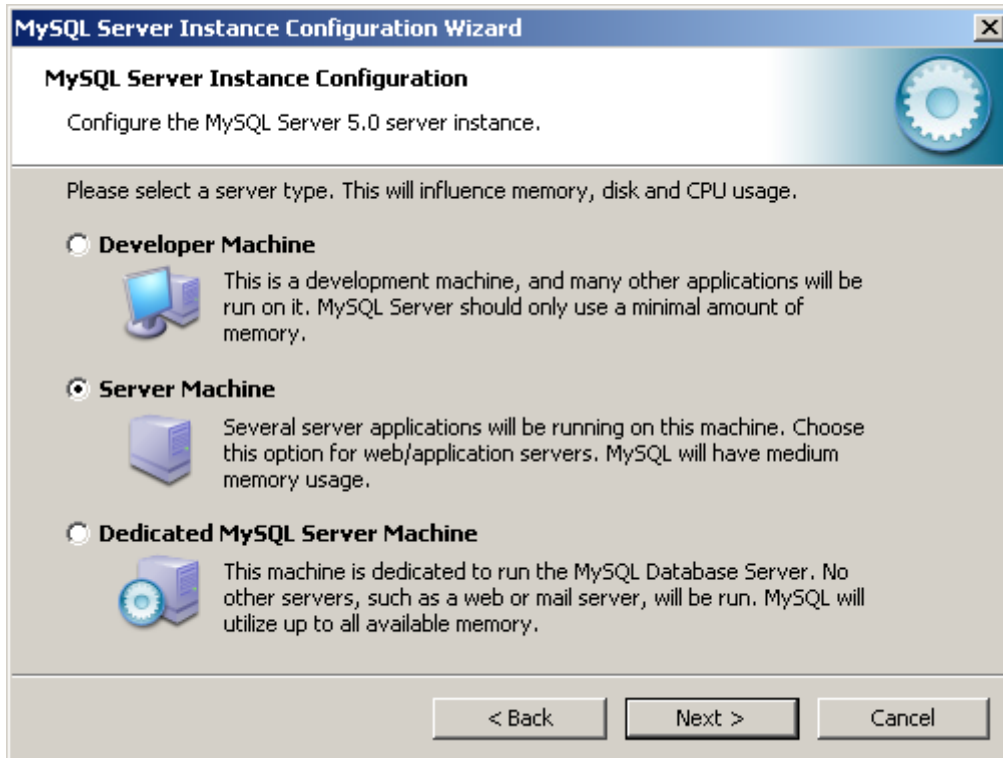


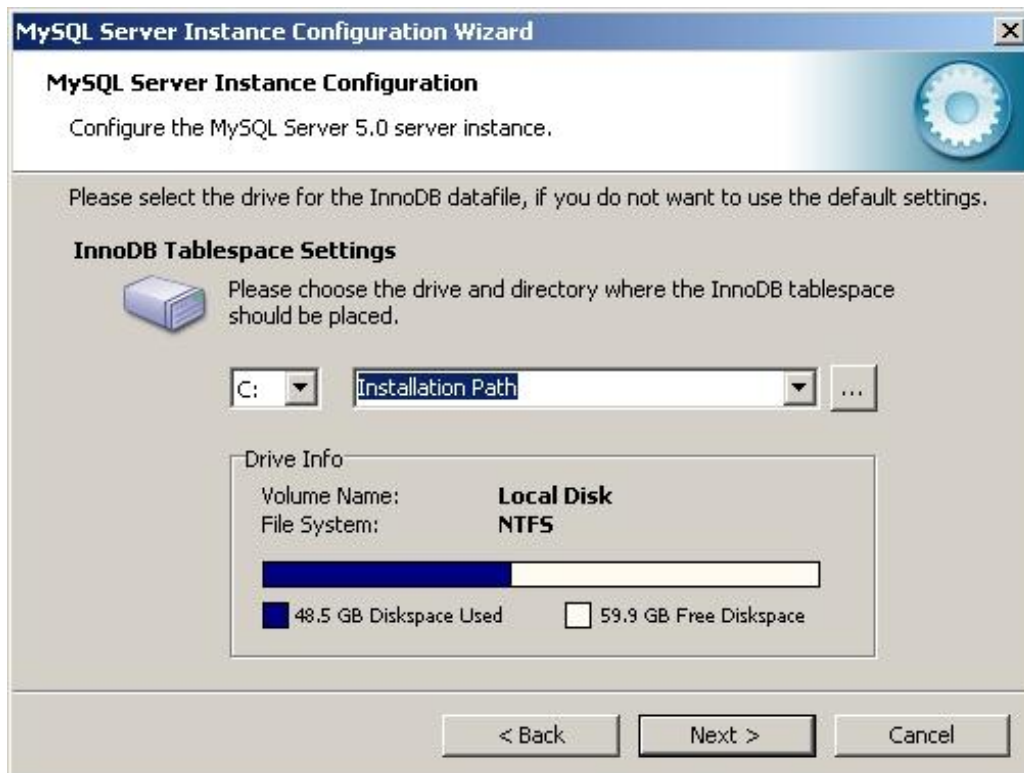
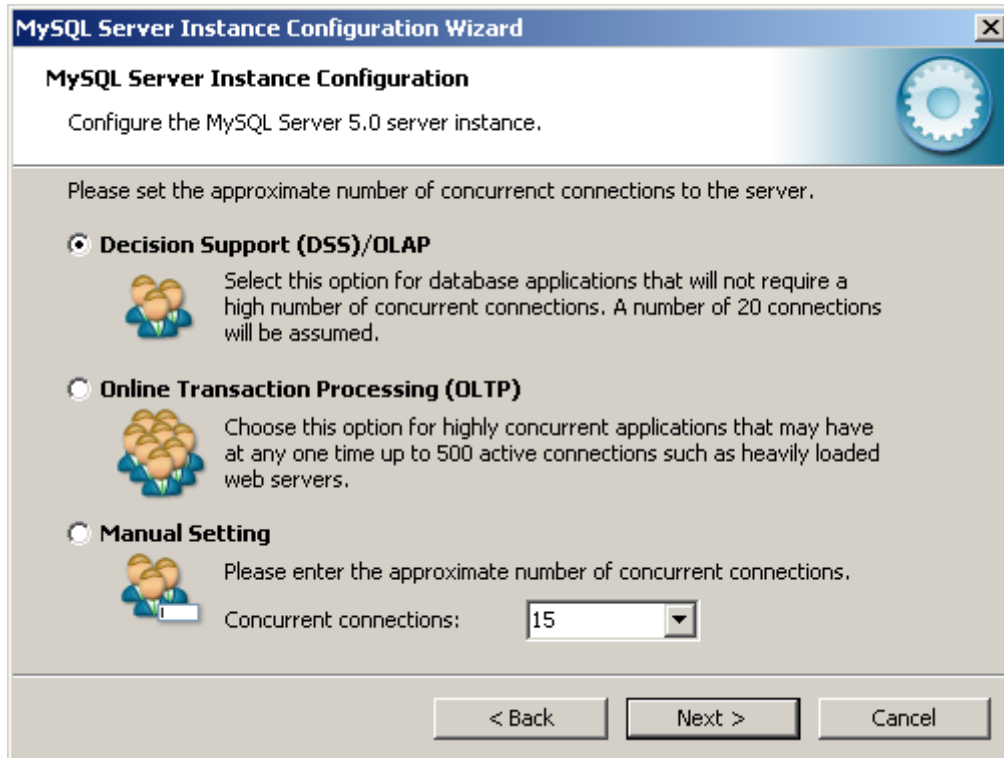




- MySQL Server Instance Configuration Wizard







MySQL Server Instance Configuration Wizard

MySQL Server Instance Configuration
Configure the MySQL Server 5.0 server instance.

Please set the networking options.

Enable TCP/IP Networking
Enable this to allow TCP/IP connections. When disabled, only local connections through named pipes are allowed.

Port Number:

Please set the server SQL mode.

Enable Strict Mode
This option forces the server to behave more like a traditional database server. It is recommended to enable this option.

< Back Next > Cancel

MySQL Server Instance Configuration Wizard

MySQL Server Instance Configuration
Configure the MySQL Server 5.0 server instance.

Please select the default character set.

Standard Character Set
Hello! Makes Latin1 the default charset. This character set is suited for English and other West European languages.

Best Support For Multilingualism
日本語 Make UTF8 the default character set. This is the recommended character set for storing text in many different languages.

Manual Selected Default Character Set / Collation
Please specify the character set to use.

Character Set:

< Back Next > Cancel

MySQL Server Instance Configuration Wizard

MySQL Server Instance Configuration
Configure the MySQL Server 5.0 server instance.

Please set the Windows options.

Install As Windows Service
 This is the recommended way to run the MySQL server on Windows.

Service Name:

Launch the MySQL Server automatically

Include Bin Directory in Windows PATH
 Check this option to include the directory containing the server / client executables in the Windows PATH variable so they can be called from the command line.

< Back Next > Cancel

MySQL Server Instance Configuration Wizard

MySQL Server Instance Configuration
Configure the MySQL Server 5.0 server instance.

Please set the security options.

Modify Security Settings

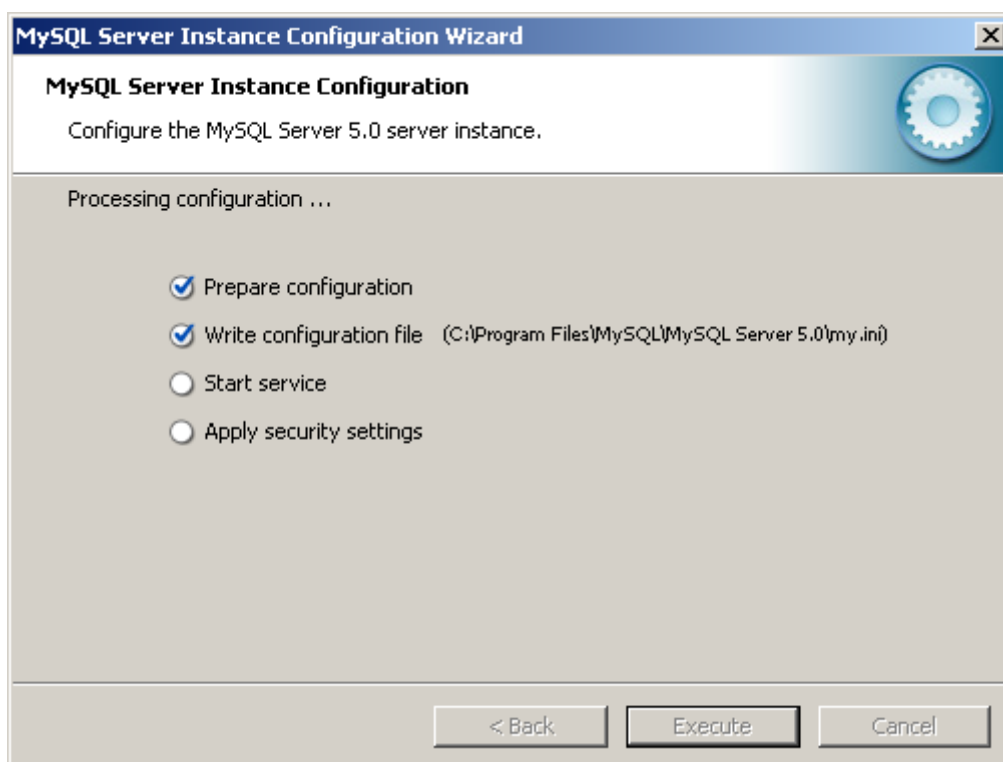
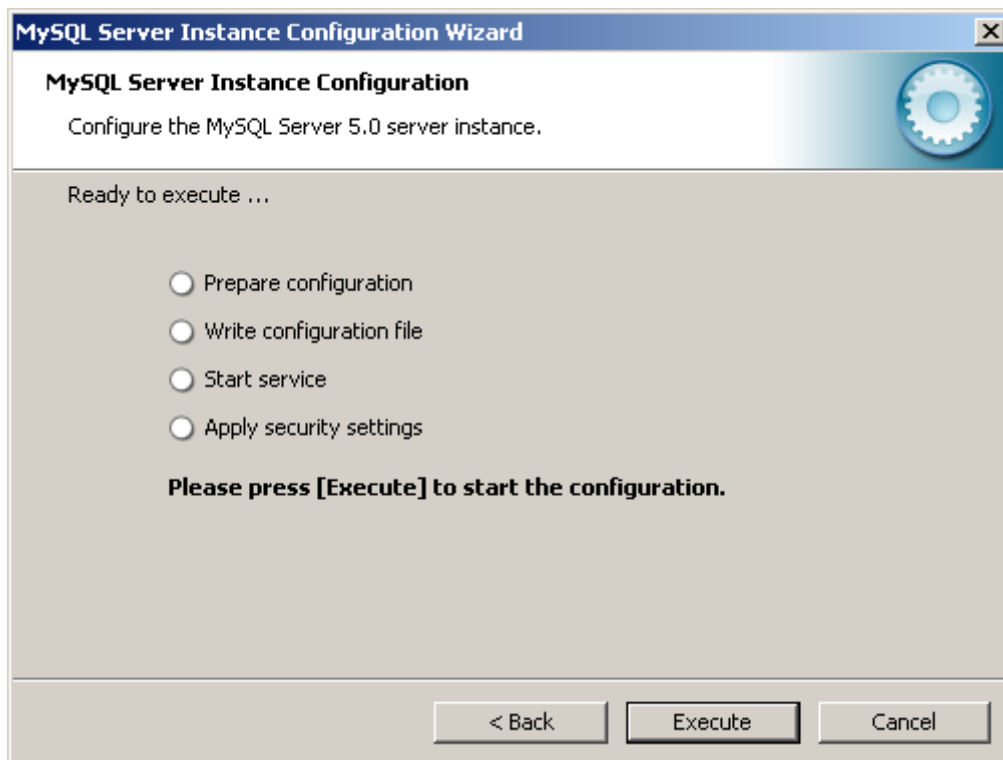
 New root password: Enter the root password.

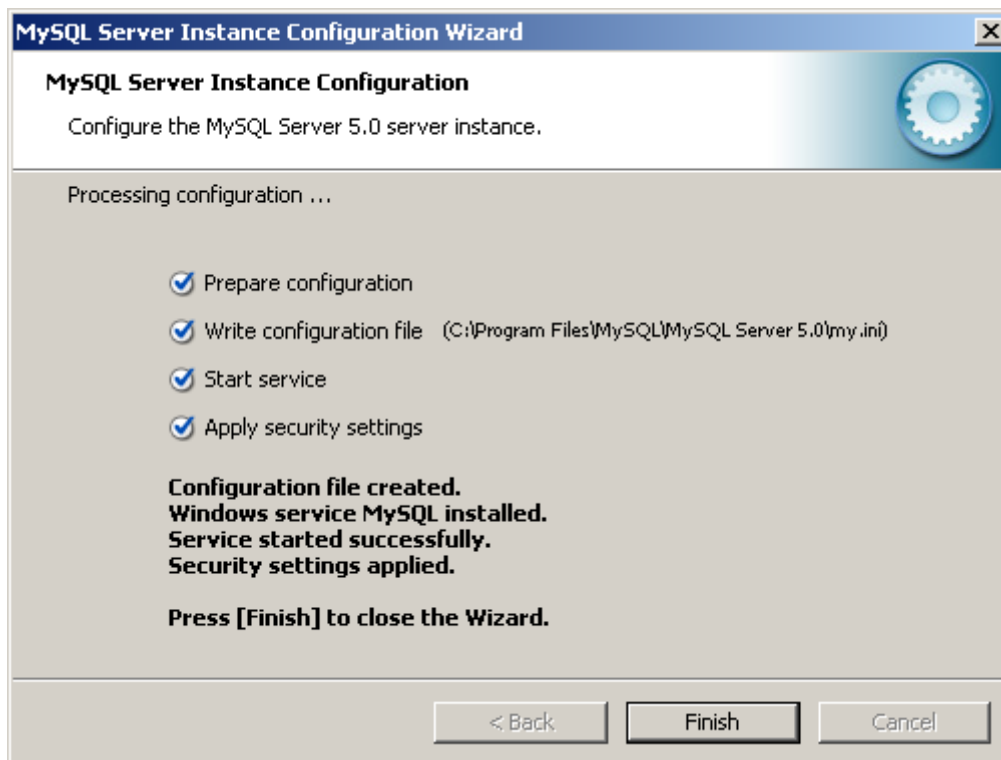
Confirm: Retype the password.

Enable root access from remote machines

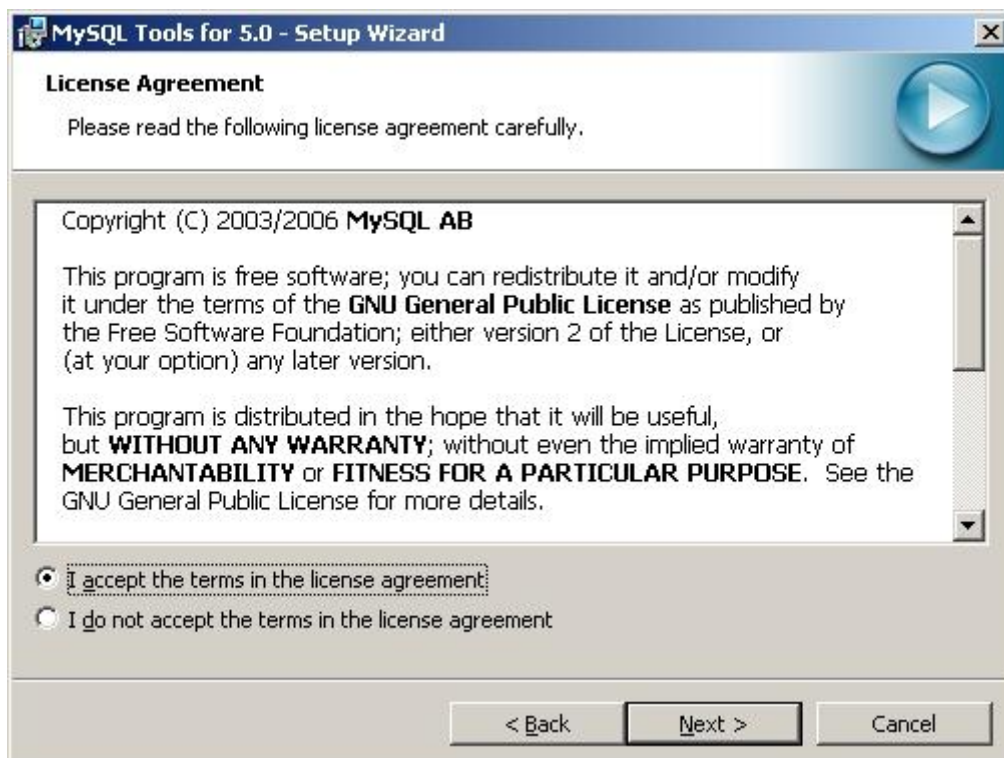
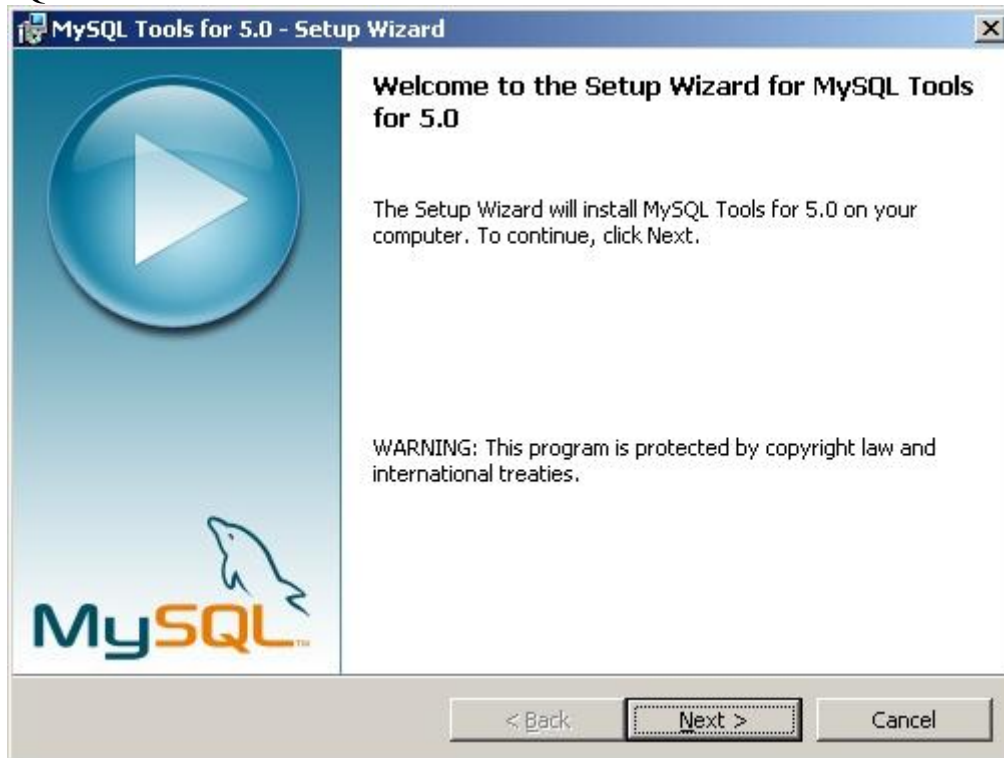
Create An Anonymous Account
 This option will create an anonymous account on this server. Please note that this can lead to an insecure system.

< Back Next > Cancel





- MySQL Tools:









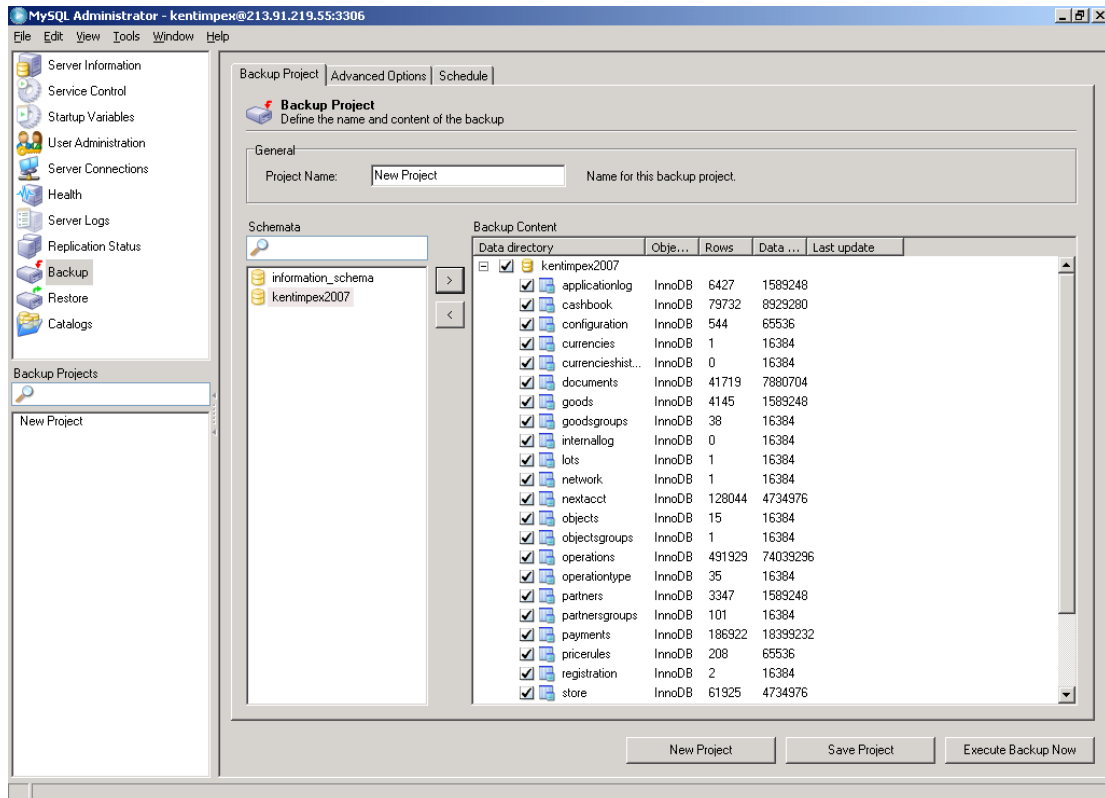
2. В Windows Firewall, раздел Exceptions добавете(отворете) порт 3306. (Проверете дали е видим този порт, и в случай, че не е, е необходимо да бъде отворен от вашия интернет доставчик.)

II. Настройка на Master сървъра:

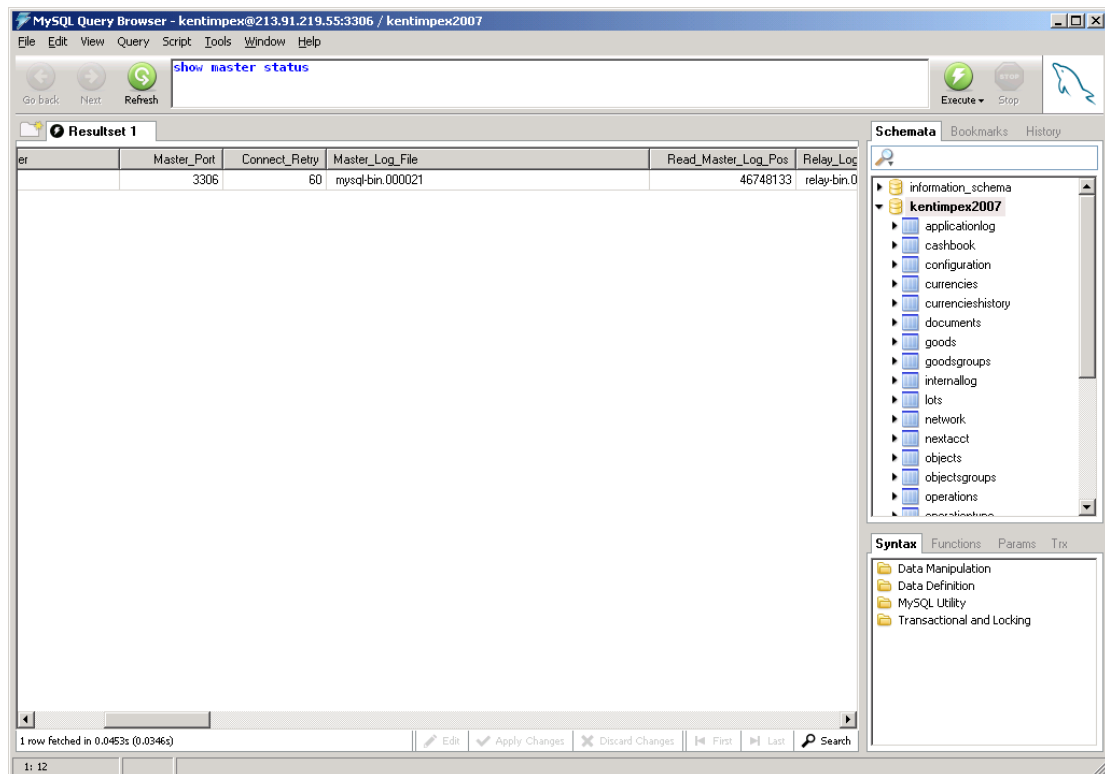
1. Създайте база данни за репликация;
2. Във файла „my.ini”, който се намира в директория MySQL Server добавете раздел:
Replication
server-id=1
log-bin=mysql-bin
connect_timeout=60
skip-name-resolve

Забележка: server id за Master „1”

3. Рестартирайте MySQL Server-a;
4. Създайте Backup бази данни с помощта на MySQL Administrator с цел да се създадат бази данни за slave.

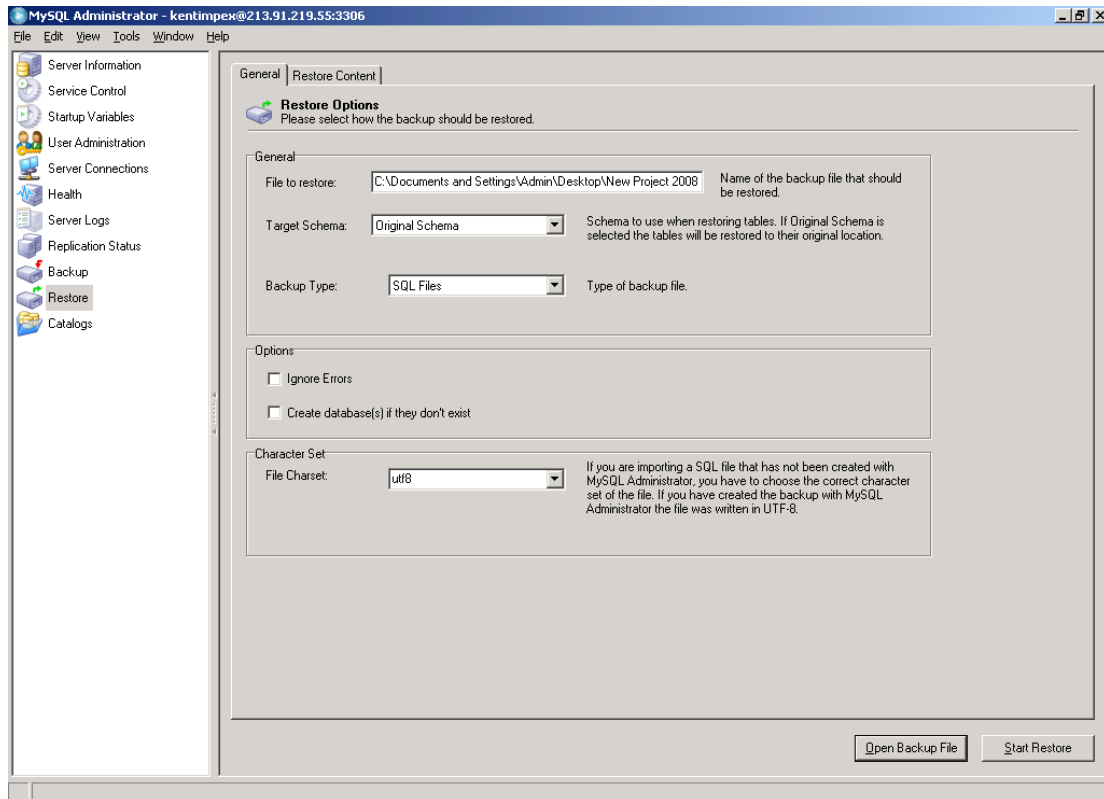


5. Изпълнете командата „show master status” в MySQL Query Browser и запишете log-файла и позицията.



III. Настройка на Slave сървъра:

1. Създайте база данни, изпълнете Restore за Backup-а, създаден като Master;



2. Във файла „my.ini”, намиращ се на MySQL Serve-а добавете раздел:

```
# Replication
server-id=2
connect_timeout=60
skip-name-resolve
slave-skip-errors=all
relay-log=relay-bin
slave_net_timeout=10
```

Забележка: Server id-тата за slave са с поредни номера и се различават за всеки Slave

3. Рестартирайте MySQL Server-а;
4. В MySQL Query Browser изпълнете командата:

```
CHANGE MASTER TO
MASTER_HOST='master_host_name',
MASTER_USER='replication_user_name',
MASTER_PASSWORD='replication_password',
MASTER_LOG_FILE='Logfile',
MASTER_LOG_POS=Log pos
```

5. В MySQL Query Browser изпълнете командата: „start slave”
6. В MySQL Query Browser изпълнете командата „show slave status”. При правилно създадена репликация, в полето „Slave_IO_State” ще бъде изписано „Waiting for master to send event”, а полето „Seconds_Behind_Master” ще бъде различно от „Null”.

